



# SCHOOL DISTRICT U-46 SOUTH ELGIN HIGH SCHOOL

Street Gang Presentation



# WHY JOIN A STREET GANG?

## Family Motives

- Life is stressful at home
- Lack of parental involvement
- Low or non-existent expectation(s) from parents
- Abuse or Neglect
- Ineffective parenting
- Permissive truancy

# WHY JOIN A STREET GANG?

## Personal Motivations

- Power and Respect
- Pride in the neighborhood
- Prestige and material possessions (cars, clothes, etc.)
- Protection
- \$Money\$

# WHY OUR STUDENTS JOIN STREET GANGS

## FAMILY

- Food
- Clothing
- Love
- Shelter
- Discipline
- Belonging
- Identification
- Security
- Status
- Caring
- Acceptance

## GANG

- Food
- Clothing
- Love
- Shelter
- Discipline
- Belonging
- Identification
- Security
- Status
- Caring
- Acceptance
- Power
- Money
- Sex
- Drugs

# METHODS OF JOINING A STREET GANG

The following are the most common ways kids and teens join street gangs-



# Initiation by Cop

- ▣ Kill a police officer



# Sexed in

Initiate females into a male dominated gang;  
wherein the female provides sexual services for  
one or more of the established gang members.





# Jumped or beat in

Having to fight a certain number of gang members, and be able to take the beating and not fight back.







# JACKED IN

Committing a Theft



# Russian Roulette



# Blood in

Commit a gang assigned murder



# Drive by shooting

Commit a drive-by-shooting as assigned by the gang



# Catching a rag, or a flag

Fighting through a group of members to grab a rag or flag, which has been placed on the other side of them.



# Deeded in

Having sex with a female or male who has a sexually transmitted disease and not getting the disease.



# Punched in

Being hit once, very hard, on the sternum- right over the heart

# Family Legacy

If a child is born in the family of a Latin King gang member: he/she is automatically a member



# VIOLATIONS

- Street gangs impose a strict set of rules and regulations to which gang members are required to adhere.
- Violations out of the gang, or “V’d out” *normally* consists of a severe beating by gang members

# MOST COMMON WAYS A STREET GANG MEMBER LEAVES THE GANG

- ▣ Jumped Out
- ▣ Boxed Out
- ▣ Cut Out
- ▣ Blood Out

# Chicago Based Street Gangs

- During the 1980's, within the prisons, gangs began separating into alliances. The two alliance names that emerged were the People Nation and the Folk Nation.
- Many gangs or *sets*, as they are commonly known, are aligned with one of the two Chicago alliances.

# Chicago Based Street Gangs

## PEOPLE NATION

- ▣ Black P-Stone(s)
- ▣ Latin Kings
- ▣ Vicelords
- ▣ Spanish Lords
- ▣ El Rukns
- ▣ Bishops
- ▣ Gaylords
- ▣ Latin Counts
- ▣ Kents

## FOLK NATION

- ▣ Black Gangster Disciples
- ▣ Black Disciples
- ▣ La Raza
- ▣ Cobras
- ▣ Eagles
- ▣ Latin Disciples
- ▣ Maniac Latin Disciples
- ▣ Simon City Royals
- ▣ Spanish Gangsters
- ▣ Two Sixers

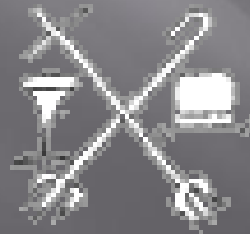
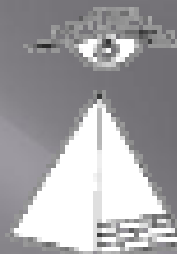
# PEOPLE- Left Side

- ❑ The PEOPLE gangs wear their identifiers to the LEFT side of the body.
- ❑ PEOPLE also represent their affiliation with the number 5 and/or the 5 pointed star.
- ❑ In their drawings, a 5 pointed crown, pyramid, top hat, crescent moon, or a rabbit head with straight ears may be seen.
- ❑ An upside down pitchfork is used to show disrespect to the rival FOLKS affiliation.



# Symbols: PEOPLE gang(s)

## PEOPLE



# Common Tattoos Used by PEOPLE Gangs

THREE OR FIVE POINT CROWN



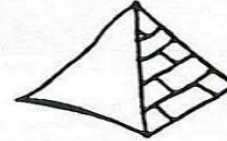
PLAYBOY BUNNY HEAD



FIVE POINT STAR



PYRAMID



STAFF



CHOLO



SPANISH CROSS



DICE



GLOVE



CRESENT MOON



TOP HAT



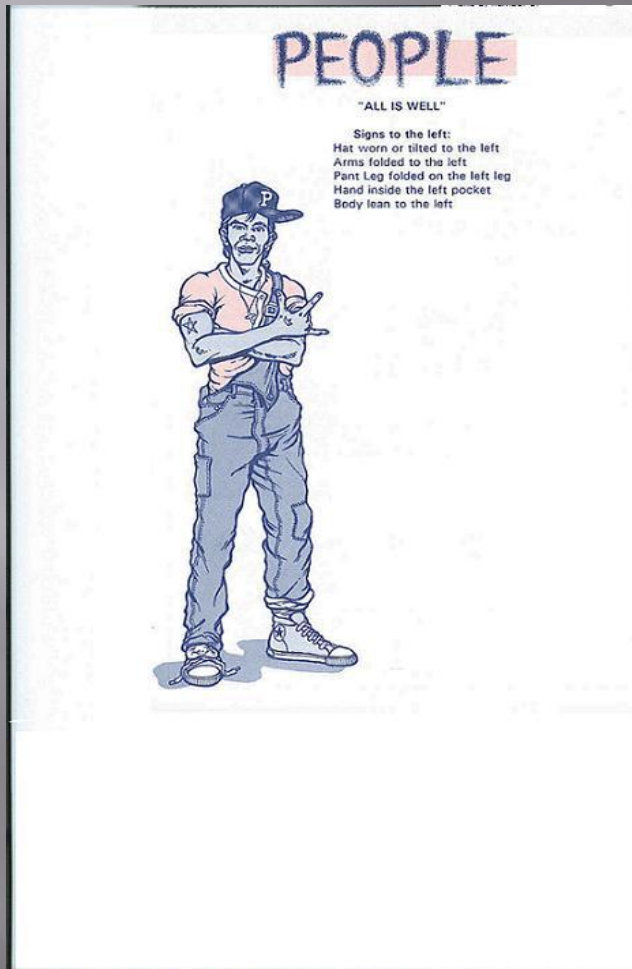
NUMBER FIVE



CHAMPAGNE GLASS



# PEOPLE Gangs Represent to the Left: *All Is Well*



12 th Street Players  
Bishops  
Black Gangsters  
Black P-Stones  
Cobra Stones  
Culerton Deuces  
El Rukn  
Insane Freaks  
Future Stones  
Gaylords  
Insane Popes  
Insane Unknowns  
Jousters  
Kenmore Boys  
Kents  
King Cobras  
Laflin Lovers  
Latin Brothers  
Latin Counts  
Latin Dragons  
Latin Kings  
Latin Pachucos  
Latin Saints  
Puerto Rican Stones

Noble Knights  
Party Gents  
Party Players  
  
Spanish Lords  
Vice Lords  
Villa Lobos  
Warlords

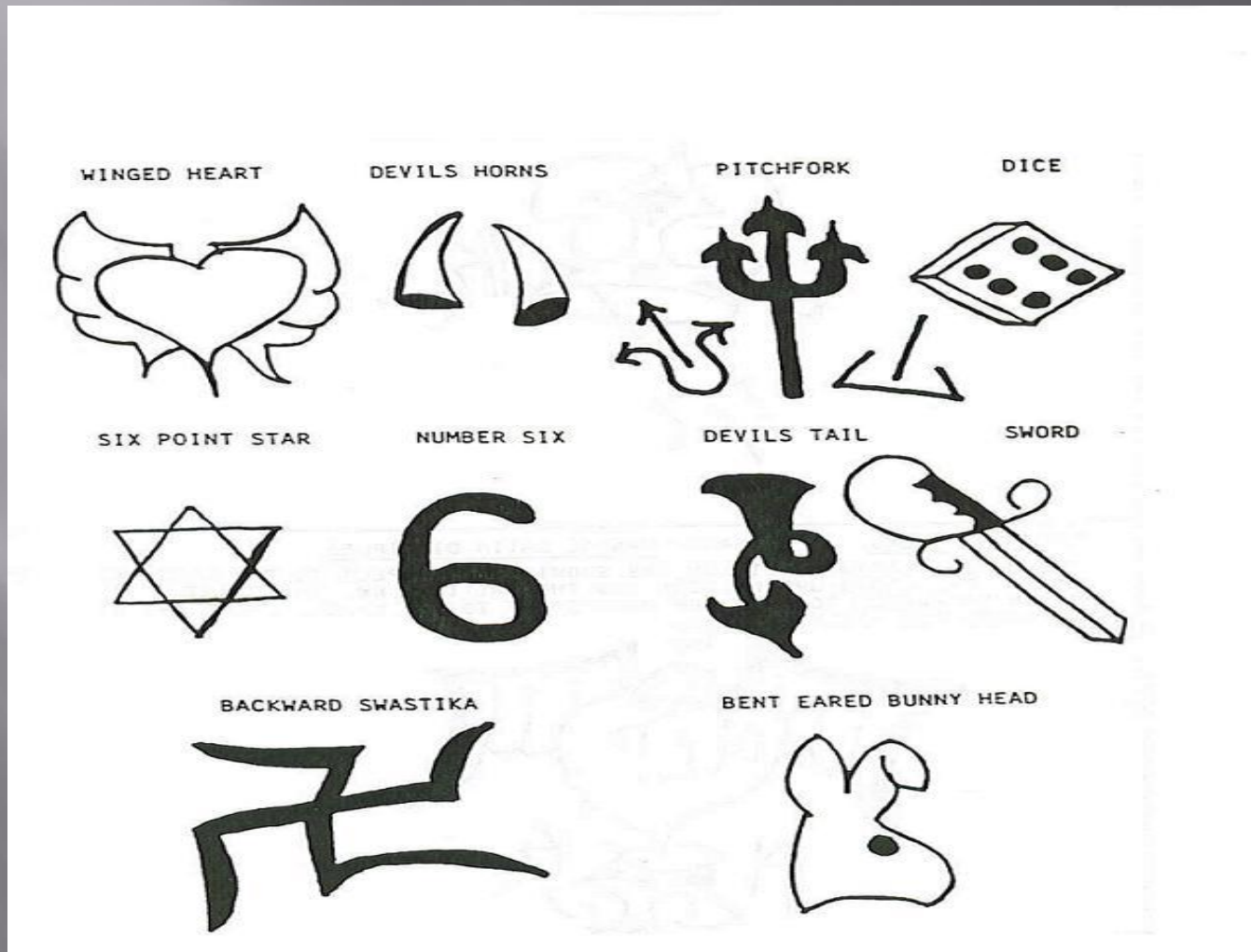
# FOLKS- Right Side

- ❑ The FOLKS gangs wear their identifiers to the right side of the body.
- ❑ They represent their affiliation with the number 6 and/or the 6 pointed Star of David.
- ❑ Drawings may consist of an upward pitchfork, a winged heart, or a rabbit head with one bent ear.
- ❑ They will draw an upside down 5 or crown to show disrespect to the rival PEOPLE gangs.

# Symbols: FOLK Gangs

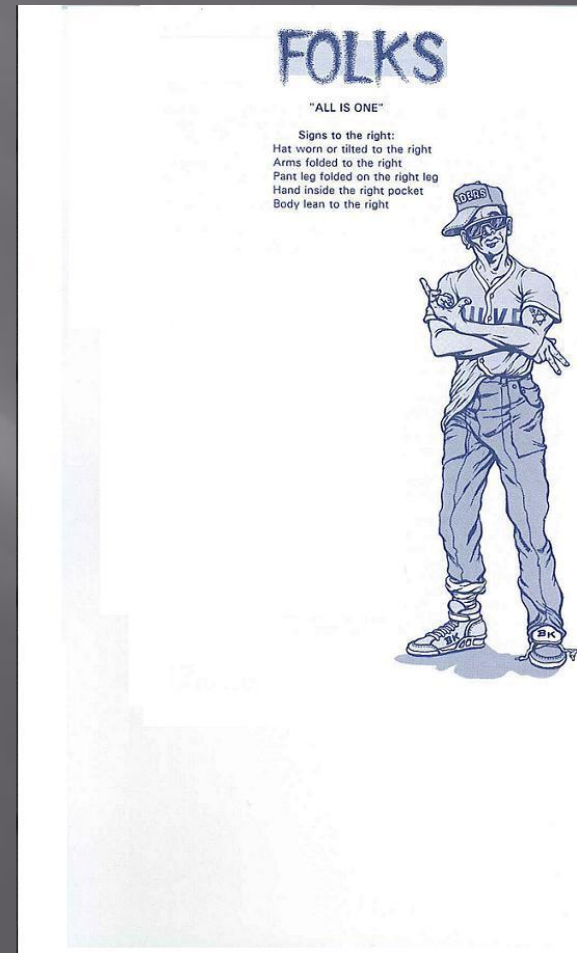


# Common Tattoos Used by FOLK Gangs



# FOLK Gangs Represent to the Right: *All Is One*

2-1 Boys	Milwaukee Kings
2-2 Boys	Morgan Boys
2-6-Boys	Orchestra Albany
Ambrose	Party People
Ashland Vikings	Racine Boys
Black Disciples	Ridgeway Lords
Black Gangster Disciples	Satin Disciples
Black Gangsters	Simon City Royals
Black Souls	Spanish Gangster Disciples
Braizers	
Campbell Boys	
C-Notes	
Gangster Disciples	
Harrison Gents	
Imperial Gangsters	
Insane Deuces	
Insane Popes	
Insane Spanish Cobras	
La Raza	
Latin Dragons	
Latin Eagles	
Latin Jivers	
Latin Souls	
Maniac Latin Disciples	





# INDEPENDENTS

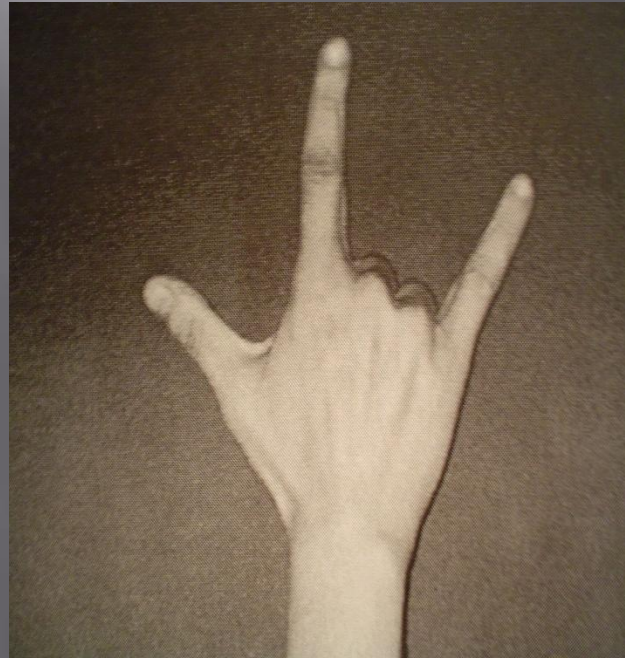
- ▣ Independent street gangs have no alliance and want to form their own factions.
- ▣ Some Independent street gangs will work along side PEOPLE or FOLK but show no alliance, usually only for a profit.

# IDENTIFIED INDEPENDENT STREET GANGS

- ▣ Ashland Vikings
- ▣ Assyrian Eagles
- ▣ Black Souls
- ▣ C-Notes
- ▣ Cullerton Deuces
- ▣ Ghetto Brothers Organization
- ▣ Yates Boys Organization
- ▣ Insane Deuces
- ▣ Party Knights
- ▣ Paulina Berry Community
- ▣ Sureno 13's
- ▣ Norteno 14's
- ▣ 18's
- ▣ Mara Salvatrucha- MS 13

# Latin Kings (PEOPLE)

- ▣ **Colors:** Black, Gold, Yellow
- ▣ **Symbols:** Lion, Sun, Diamond, 5 point crown, Kings Head



# Latin Kings (PEOPLE)







Chicago, Ill. - Motherland of the A. I. R. Q. N.

# Gangster Disciples (FOLKS)

- ❑ AKA 7-4, BOS (Brothers of Struggle) gangsters
- ❑ Colors: Black, Blue
- ❑ Symbols: 6 point star, pitchforks facing up



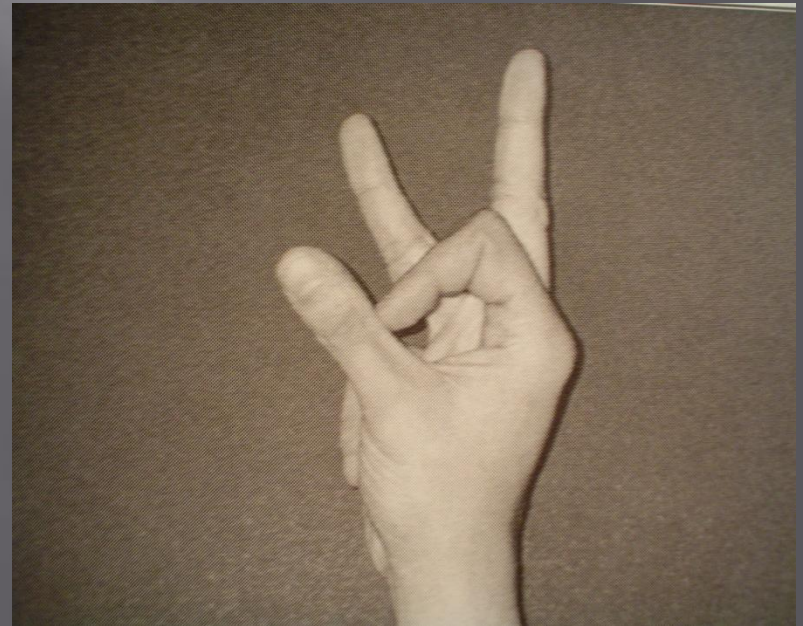






# 2-6 Boys (FOLKS)

- ▣ AKA 2-6
- ▣ Colors: Tan, Black
- ▣ Symbols: Rabbit Head, T Sword, Dice on the 2 and 6, 3 dots







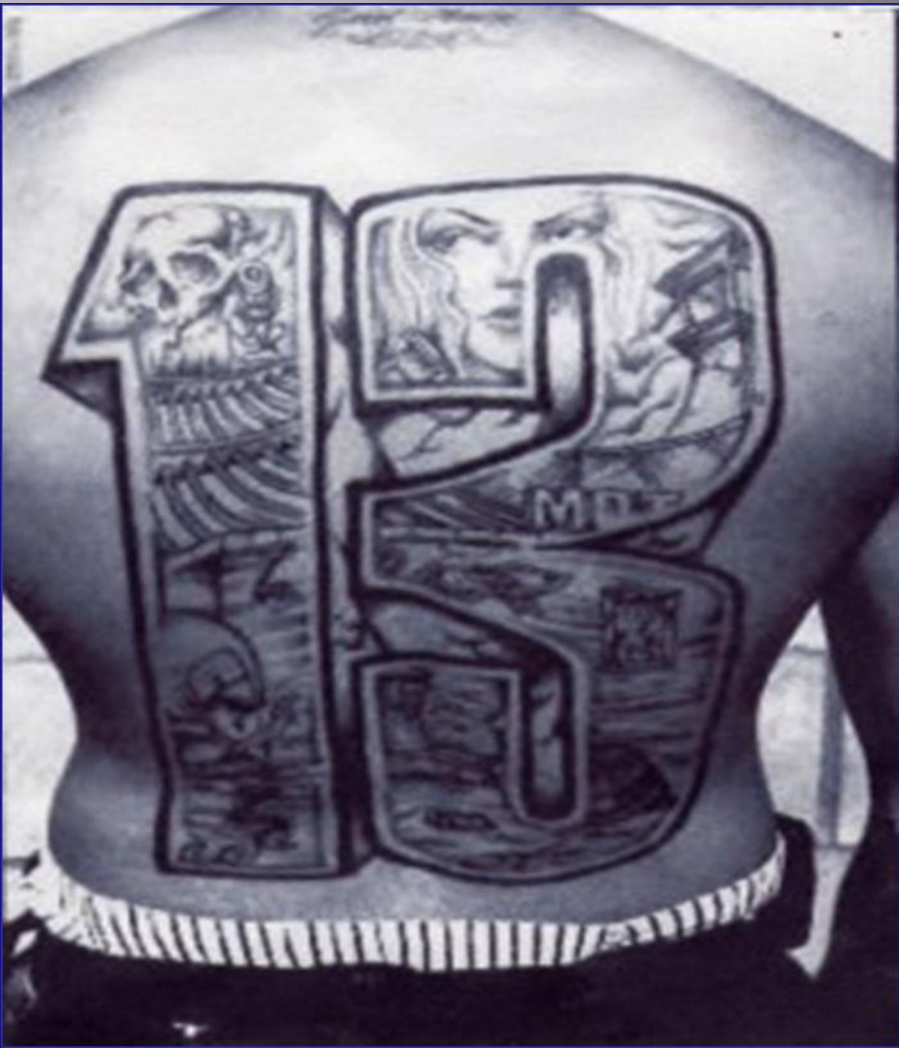
# 13 Sureños- NO ALLIANCE

- ▣ From Southern California
- ▣ AKA Mexican Mafia, SUR 13, Sureños
- ▣ Color: Blue
- ▣ Symbols: SUR, 213, 76, 67, X3, XIII, 3 dots







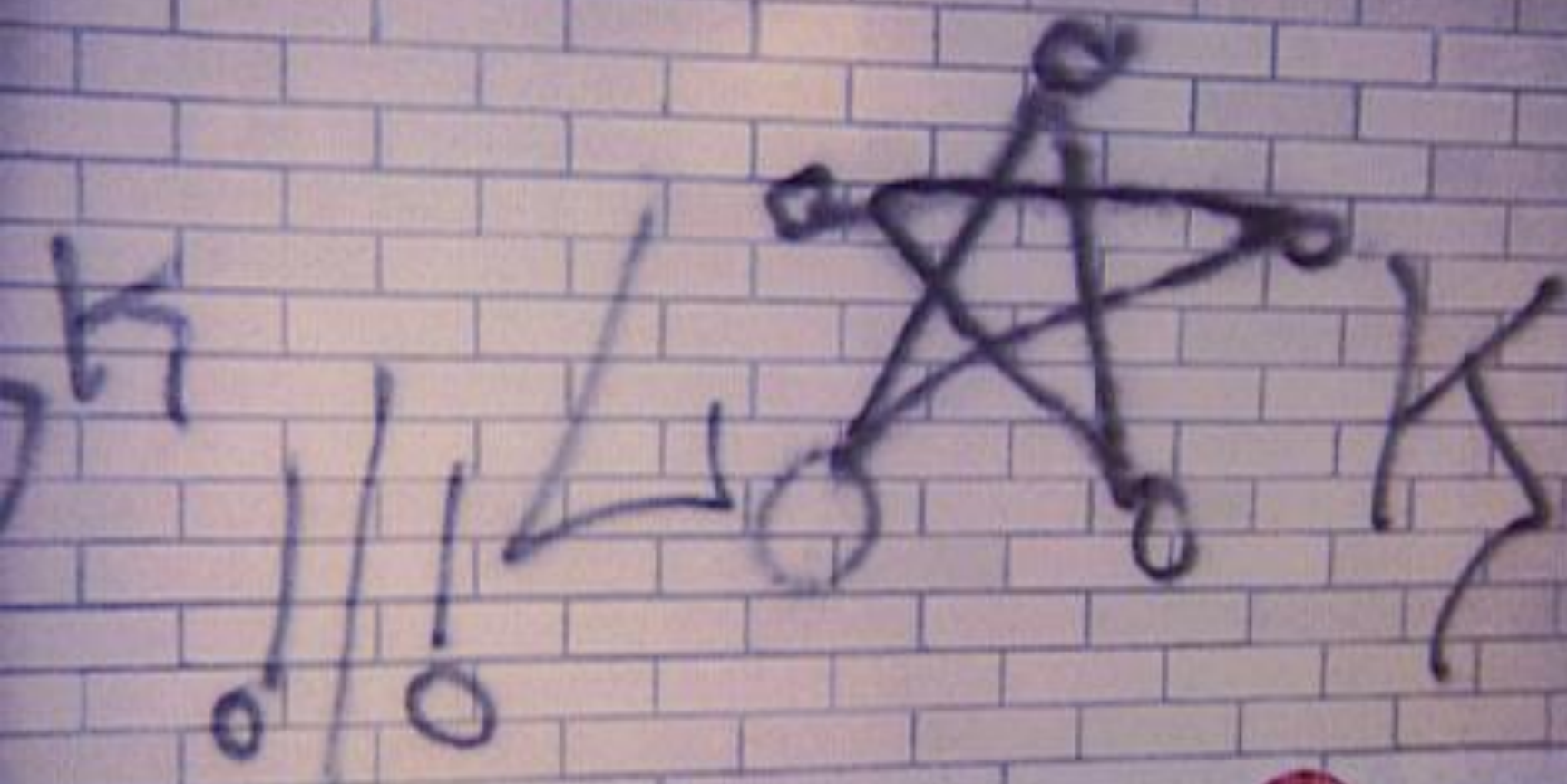






Graffiti, Denotes Latin King, L-K and face with crown

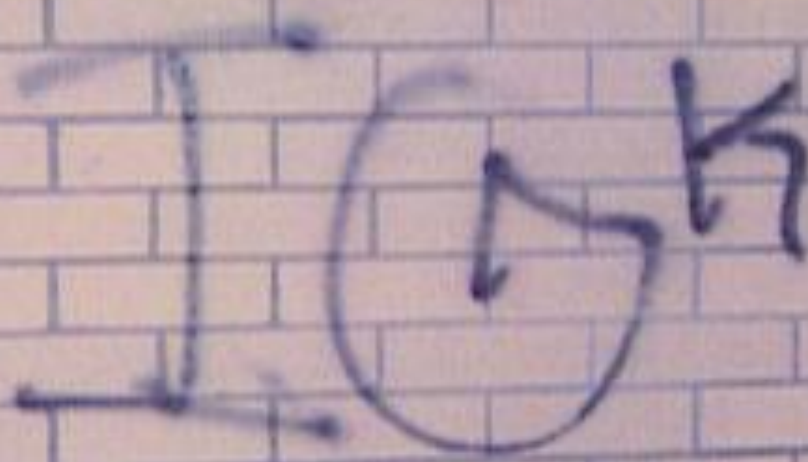




5 point star+L+K= Latin King,  
Note the three slashes going  
down. This is a "Dis" to a Folk  
Gang







IG K

The K next to the IG= "Killer"  
IG Killer disrespecting  
Imperial Gangsters



When symbols are backwards,  
this indicates a sign of  
disrespect

# FACT

Every day a new, young recruit will join a street gang. The easier it is to join...the more difficult it is to get out.

# Something You Should Know

- ▣ As of January 1, 2005
- ▣ It is illegal and a CLASS I Felony for any person to threaten the use of force to coerce, solicit, RECRUIT, or induce another person to join or remain a member of a criminal street gang, or conspires to do so when on school grounds or on public property adjacent to school grounds.
- ▣ 720 ILCS 5/12-6.4

# Common Warning Signs to Watch for

- Sudden changes in behavior
- A sudden drop in grades
- A lack of interest in extra curricular activities or school
- Unexplained truancies
- Low self-esteem
- Resentment of authority figures: police, teachers, other adults
- Signs of alcohol or drug abuse and possession
- Photographs displaying hand signs, weapons, or cash
- A radical change in clothing style and personal experience
- Flashing of hand signs to friends
- Gang graffiti on personal property
- Unexplained increases in income
- Improper use of vocabulary
- Possession of weapons-guns, knives, or homemade items
- Phone threats to the family from rival gangs or unknown callers



# What Can A Teacher Do?

- ▣ Develop and enforce a strict code of conduct
- ▣ Have high expectations of language and behavior
- ▣ Immediate contact with parents about issues and concerns
- ▣ Prohibit gang related clothing, jewelry, tattoos, graffiti, and paraphernalia
- ▣ Close supervision by staff
- ▣ Keep school records of known gang members and associates
- ▣ Confiscate notebooks with graffiti and any gang paraphernalia (give to police officer)
- ▣ Always network and communicate with the school police officer

# What Teachers Should Do

- ▣ Pay close attention to clothing representing gang affiliation (shirts, hats, shoe lace colors, etc.)
- ▣ Slipping grades
- ▣ Excessive absenteeism
- ▣ Notebook graffiti- pay close attention to letters, numbers, and symbols. Give to school police officer.
- ▣ Hand signs
- ▣ Tattoos and other changes in appearance
- ▣ Changes in vocabulary